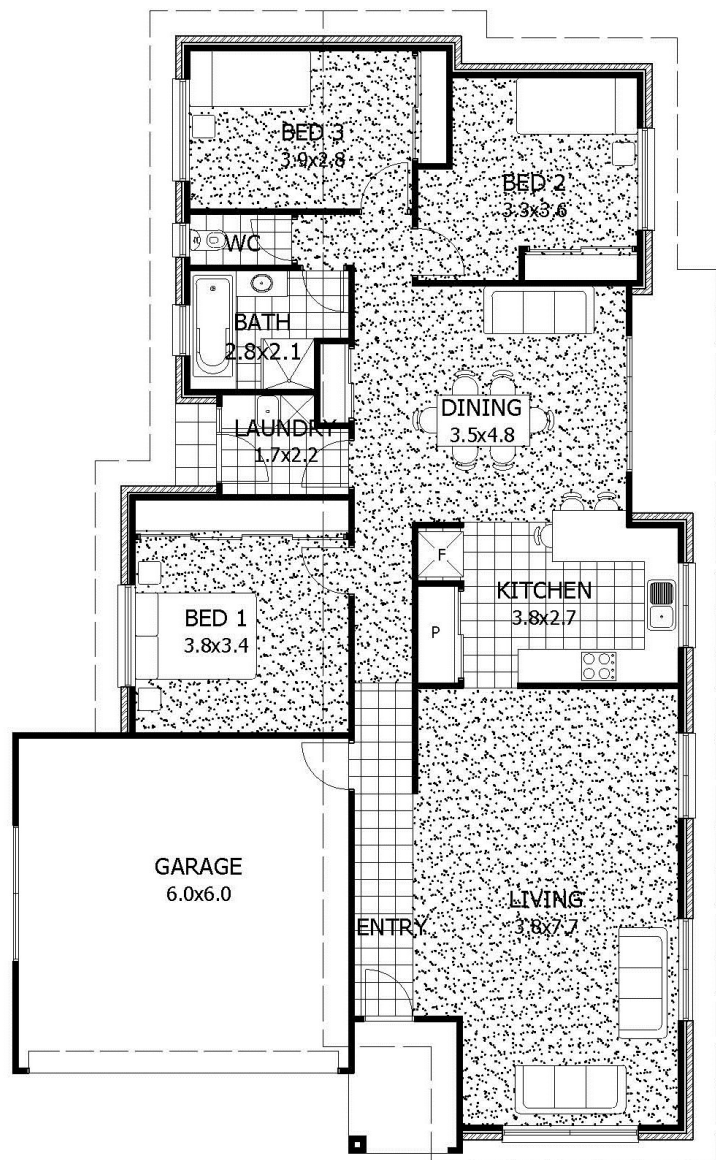


BAMBRA



House Area:	144.8m ²
Garage	36m ²
Total Area	180.8m ² (19.4sq)
Length :	19.6m
Width :	11.9m

Bed:	3
Bath:	1
Garage:	Double



Phone: 03 6247 9073

79 South Arm Road, ROKEBY

Email: info@tasmanianhomes.com.au

Web: www.tasmanianhomes.com.au

Please Note: The above picture/floorplan is for illustration purposes only and not to scale. Some items shown in picture/floorplan may not be standard inclusions. Decks are optional extras and not a standard inclusion.