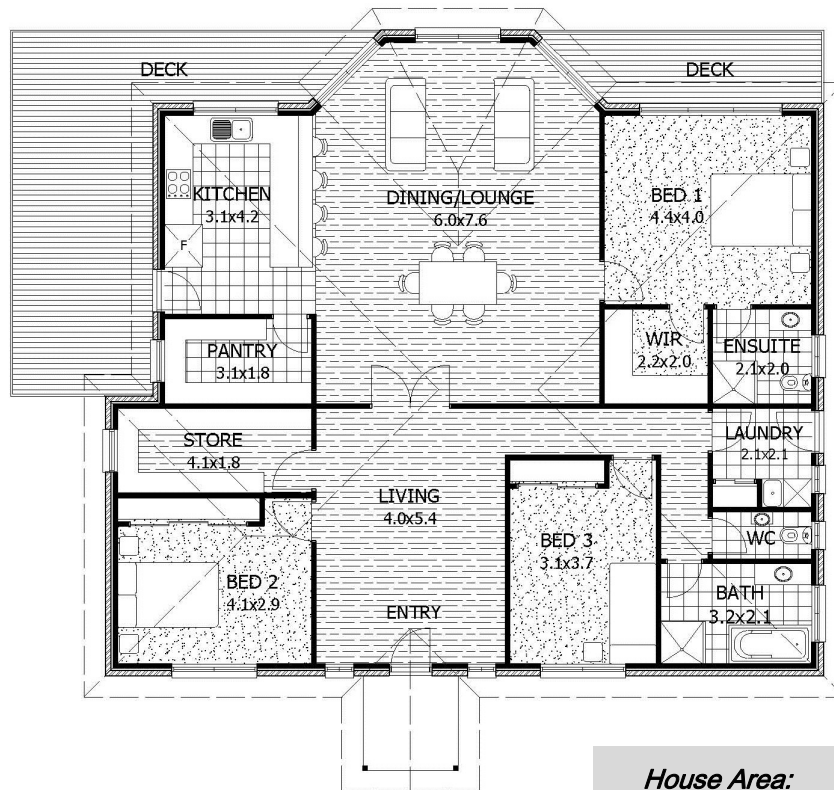


BAYVIEW 3



House Area: 175.5m²
(18.8sq)

Length : 15.1m

Width : 13.6m

Bed: 3

Bath: 2

Garage: -

tasmanian
building & design **homes**

Phone: 03 6247 9073

79 South Arm Road, ROKEBY

Email: info@tasmanianhomes.com.au

Web: www.tasmanianhomes.com.au

Please Note: The above picture/floorplan is for illustration purposes only and not to scale. Some items shown in picture/floorplan may not be standard inclusions. Decks are optional extras and not a standard inclusion.