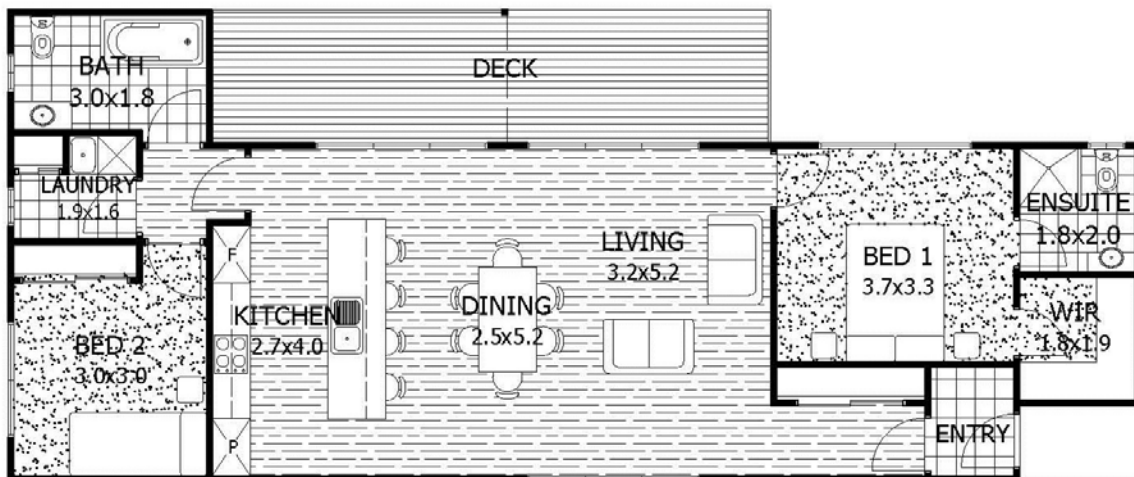


LONGVIEW 2



House Area: 97.3m²
(10.4sq)

Length : 17.6m

Width : 7.3m

Bed: 2

Bath: 2

Garage: -

tasmanian
building & design **homes**

Phone: 03 6247 9073

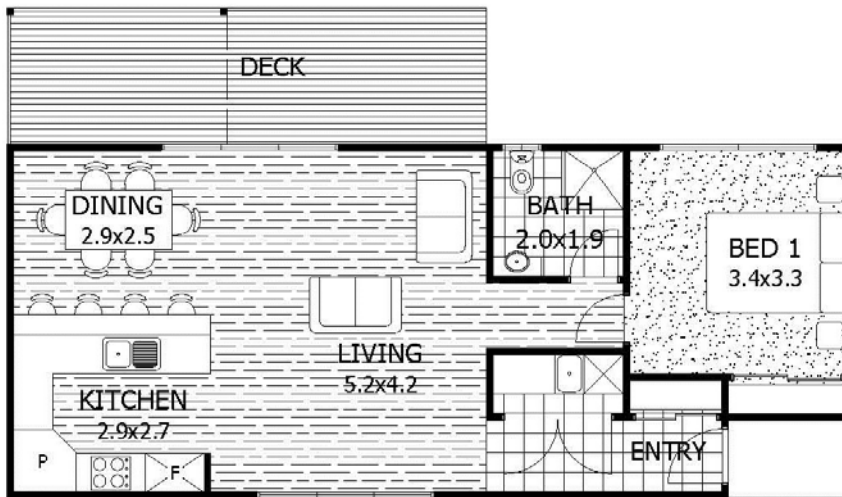
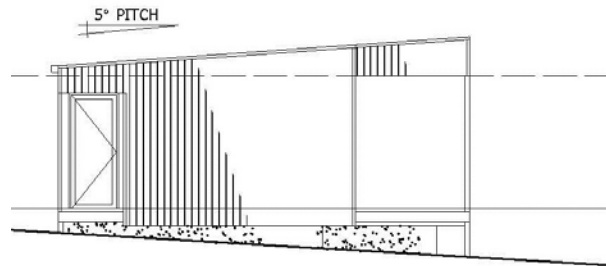
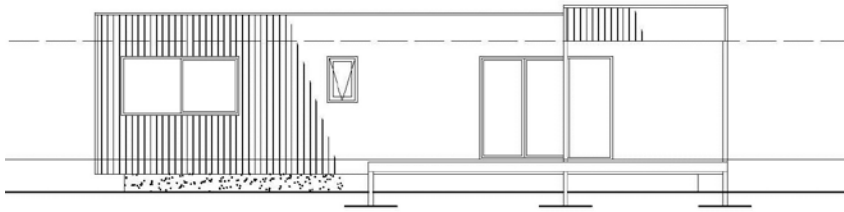
79 South Arm Road, ROKEBY

Email: info@tasmanianhomes.com.au

Web: www.tasmanianhomes.com.au

Please Note: The above picture/floorplan is for illustration purposes only and not to scale. Some items shown in picture/floorplan may not be standard inclusions. Decks are optional extras and not a standard inclusion.

LONGVIEW 1



House Area: 66.9m²
(7.2sq)

Length : 12.8m

Width : 5.3m

Bed: 1

Bath: 1

Garage: -



Phone: 03 6247 9073

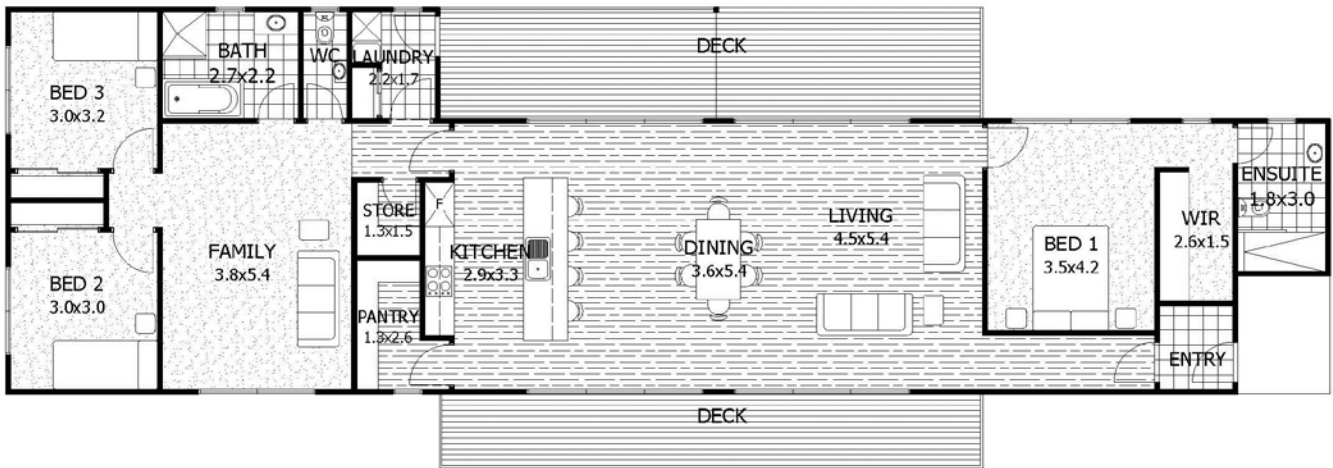
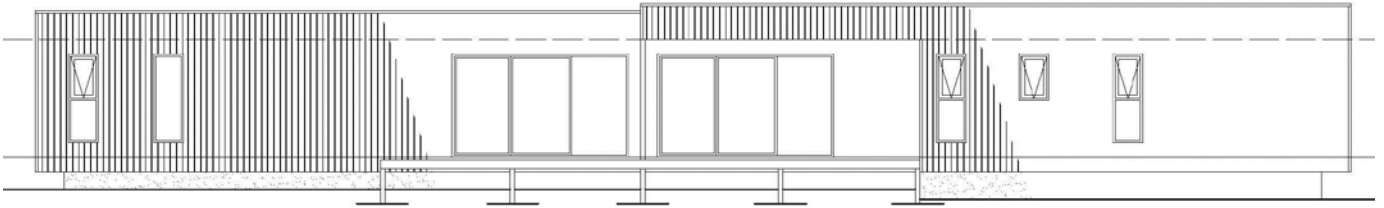
79 South Arm Road, ROKEBY

Email: info@tasmanianhomes.com.au

Web: www.tasmanianhomes.com.au

Please Note: The above picture/floorplan is for illustration purposes only and not to scale. Some items shown in picture/floorplan may not be standard inclusions. Decks are optional extras and not a standard inclusion.

LONGVIEW 3



House Area: 165.6m²
(17.8sq)

Length : 26.9m

Width : 7.8m

Bed: 3

Bath: 2

Garage: -

tasmanian
building & design **homes**

Phone: 03 6247 9073

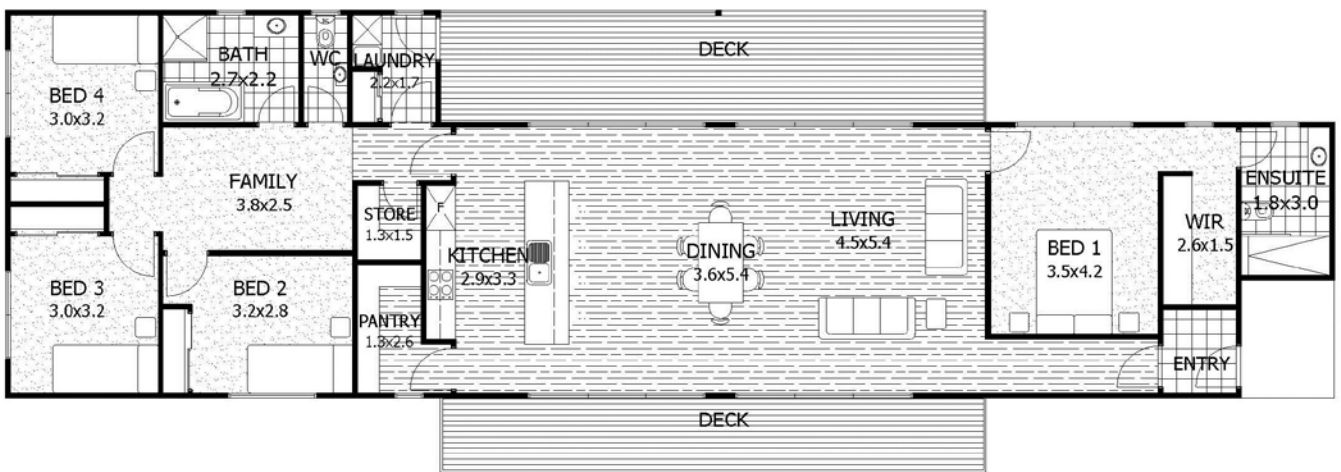
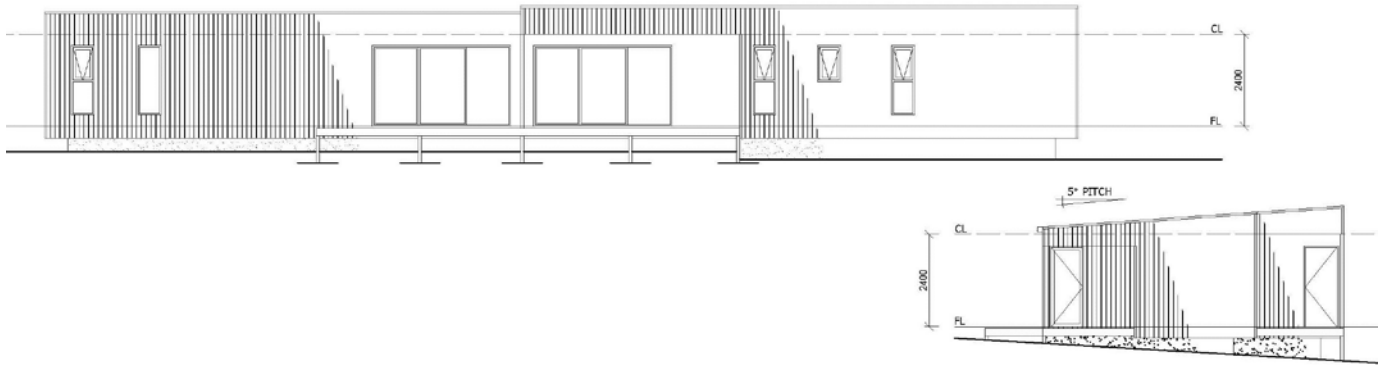
79 South Arm Road, ROKEBY

Email: info@tasmanianhomes.com.au

Web: www.tasmanianhomes.com.au

Please Note: The above picture/floorplan is for illustration purposes only and not to scale. Some items shown in picture/floorplan may not be standard inclusions. Decks are optional extras and not a standard inclusion.

LONGVIEW 4



House Area:	165.6m² (17.8sq)
Length :	26.9m
Width :	7.8m

Bed:	4
Bath:	2
Garage:	-



Phone: 03 6247 9073

79 South Arm Road, ROKEBY

Email: info@tasmanianhomes.com.au

Web: www.tasmanianhomes.com.au

Please Note: The above picture/floorplan is for illustration purposes only and not to scale. Some items shown in picture/floorplan may not be standard inclusions. Decks are optional extras and not a standard inclusion.