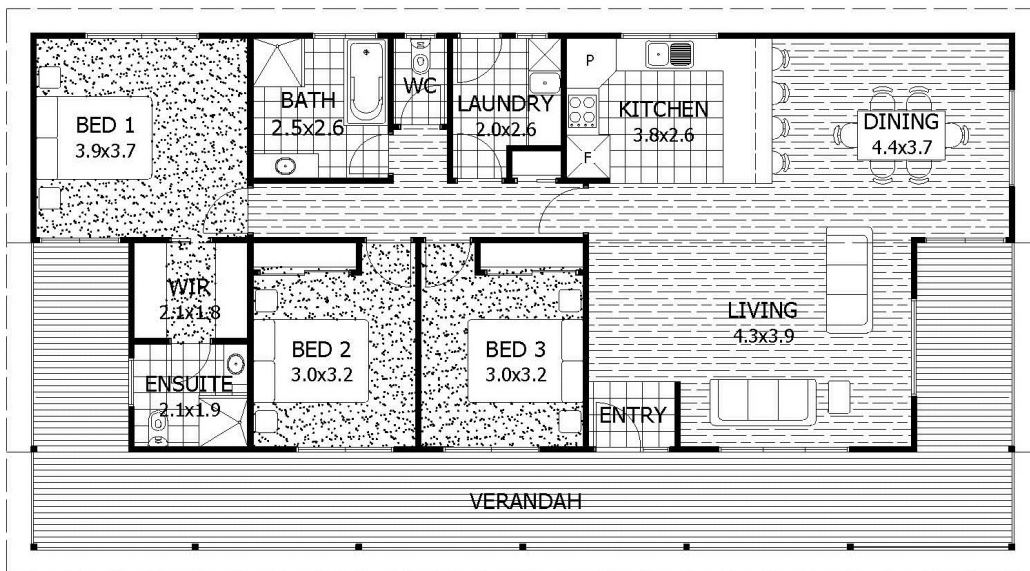


# SOUTH ARM



**House Area:** 125.5m<sup>2</sup>  
(13.5sq)

**Length :** 18.1m

**Width :** 9.5m

**Bed:** 3

**Bath:** 2

**Garage:** -

**tasmanian**  
building & design **homes**

**Phone: 03 6247 9073**

**79 South Arm Road, ROKEBY**

Email: [info@tasmanianhomes.com.au](mailto:info@tasmanianhomes.com.au)

Web: [www.tasmanianhomes.com.au](http://www.tasmanianhomes.com.au)

*Please Note: The above picture/floorplan is for illustration purposes only and not to scale. Some items shown in picture/floorplan may not be standard inclusions. Decks are optional extras and not a standard inclusion.*